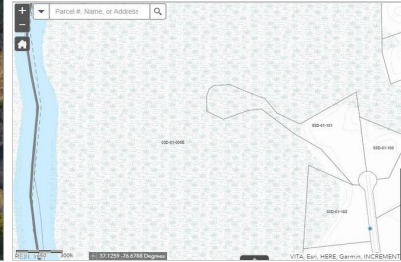
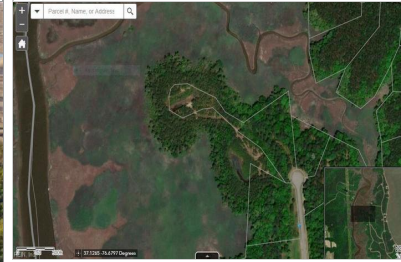


1210 CREEKWAY

SMITHFIELD, VIRGINIA 23430

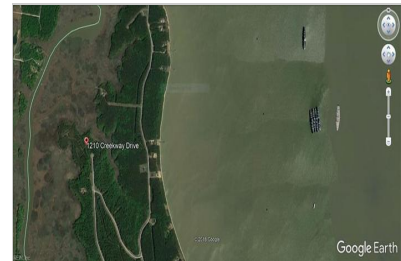
\$115,000 | 4.97 ACRES SQUARE FEET



View Online: <http://1210creekway.homeis4sale.com>
For Instant Photos: Text 686970 To 415-877-1411

This home site has a 180 degree panoramic view of the marsh and Lawnes Creek. You will have stunning sunsets from your back porch and garden. The land is packed with deer, turkey and beautiful waterfowl across the marsh. Your own private peninsula of nature. Lawnes Point is an upscale waterfront community bordered by Lawnes creek to the west and the mighty James River on the east. Nearly four acres of land provides the ample privacy you want but on paved roads with public utilities. Ten minutes from historic downtown Smithfield with it's quaint shops and restaurants along the brick sidewalks and old fashioned street lights. Perfect location to raise a family or enjoy your retirement. Neighborhood building specifications available upon request.

- Stunning Sunsets
- Public Utilities
- Nearly 4 Acres to build your dream home
- Quiet Cul de Sac Location
- Paved Roads
- Close to Historic Downtown Smithfield



AGENT INFORMATION

Jon May
M: 757-356-1226
License # 0225181649
jmay@fathomrealty.com
jonmay.fathomrealty.com

Fathom Realty
11815 Fountain Way
Newport News, VA 23606

ABOUT JON MAY

Full time since 1992, it continues to be a great pleasure to have a small part in my clients lives. It is an honor to assist my clients in moving to the next season of their lives by selling their home at the highest possible price in the shortest amount of time. It is a privilege to share in a first time home buyers dreams and goals or help a growing family find a larger home. The majori...

□

□

Disclaimer: All information deemed reliable but not guaranteed.