

1251 LAWNES NECK DRIVE

SMITHFIELD, VA 23430 | MLS #: 10344494

\$180,000 | 1.39 ACRES SQUARE FEET



View Online: <http://1251lawnesneckdrive.homeis4sale.com>
For Instant Photos: Text 240657 To 415-877-1411

You are going to love the stunning views from this riverfront home site that sits high above the James River. Level

building area and nicely wooded lets you build your private retreat on the water. Plenty of room for an in ground pool, or

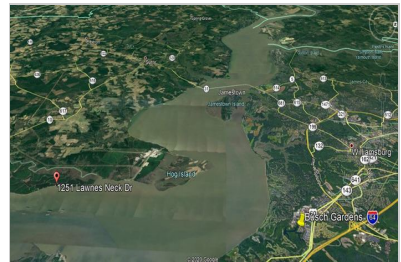
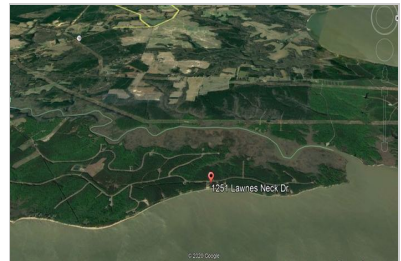
extra garage with 1.39 acres of land to work with. Build a pier and boat lift out onto the James River to entertain family

and friends, or just enjoy fishing from the sandy beach in your back yard. Ten minutes from historic downtown

Smithfield with it's quaint shops and restaurants along the brick sidewalks and old fashioned street lights. Perfect

location to raise a family or enjoy your retirement. Neighborhood building specifications available upon request.

- Stunning Views
- Riverfront Homesite
- High Level Homesite
- 1.39 Acres nicely wooded
- City Sewer & Water, Electricity
- Paved Roads
- Minutes from Historic Downtown Smithfield
- Can connect you with a great local builder



AGENT INFORMATION

Jon May
M: 757-356-1226
License # 0225181649
jmay@fathomrealty.com
jonmay.fathomrealty.com



Fathom Realty
11815 Fountain Way
Newport News, VA 23606

ABOUT JON MAY

Full time since 1992, it continues to be a great pleasure to have a small part in my clients lives. It is an honor to assist my clients in moving to the next season of their lives by selling their home at the highest possible price in the shortest amount of time. It is a privilege to share in a first time home buyers dreams and goals or help a growing family find a larger home. The majori...

□

□

Disclaimer: All information deemed reliable but not guaranteed.