

1251 LAWNES NECK DRIVE

SMITHFIELD, VA 23430 | MLS #: 10344494

\$180,000 | 1.39 ACRES SQUARE FEET



View Online: <http://1251lawnesneckdrive.homeis4sale.com>

For Instant Photos: Text 240657 To 415-877-1411

You are going to love the stunning views from this riverfront home site that sits high above the James River. Level

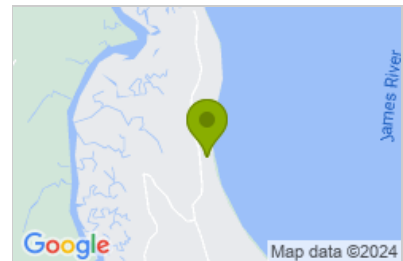
building area and nicely wooded lets you build your private retreat on the water. Plenty of room for an in ground pool, or

extra garage with 1.39 acres of land to work with. Build a pier and boat lift out onto the James River to entertain family

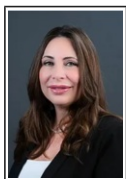
and friends, or just enjoy fishing from the sandy beach in your back yard. Ten minutes from historic downtown

Smithfield with it's quaint shops and restaurants along the brick sidewalks and old fashioned street lights. Perfect

location to raise a family or enjoy your retirement. Neighborhood building specifications available upon request.



- Stunning Views
- Riverfront Homesite
- High Level Homesite
- 1.39 Acres nicely wooded
- City Sewer & Water, Electricity
- Paved Roads
- Minutes from Historic Downtown Smithfield
- Can connect you with a great local builder



AGENT INFORMATION

Cherie Martinez

P: 561-223-9393

cheriewpb@gmail.com

Paradise Real Estate International

601 Heritage Dr

Jupiter, FL 22458

ABOUT CHERIE MARTINEZ

I have lived in the South Florida area since 1999 and have worked in Broward, Palm Beach, Martin, Miami and St. Lucie assisting those who are looking for properties (residential, investment or commercial), financing guidance and business consulting. I hold a BA Degree in Finance and Accounting and have cultivated my knowledge specific to the needs of locals and their industry specific req...

□

□

Disclaimer: All information deemed reliable but not guaranteed.